



Common Operational Picture Environment

Cybernetics Faculty
Computer and Information Systems Institute
 phone: (+48) 22 683 95 04
 e-mail: rkasprzyk@wat.edu.pl
<http://www.wcy.wat.edu.pl>

Every day societies have to deal with various threats. These may either have environmental background like flood, earthquake etc. but also may be a result of criminal activities. In both cases, victims always count on quick help from specialized agencies. When it comes to undertake a rescue mission it is always necessary to combine unit specialties effectively. Then, in addition to a rapid response and appropriate resource allocation, effective unit coordination may prove to be crucial.

As military experience shows information superiority and appropriate technical support are the key factors which allow to carry out successful actions much easier, and above all, safer (**ASAPx2 = As Soon As Possible Achieve Situational Awareness Predominance**). Therefore, COPE system has been developed. Its purpose is to support users - both these out in the field as well as those working in the command center - so that they can perform their tasks more efficiently. COPE system creates a *Common Operational Picture (COP)* to improve situational awareness for decision-making at any level: by an individual, a unit, up to the crisis management command center.

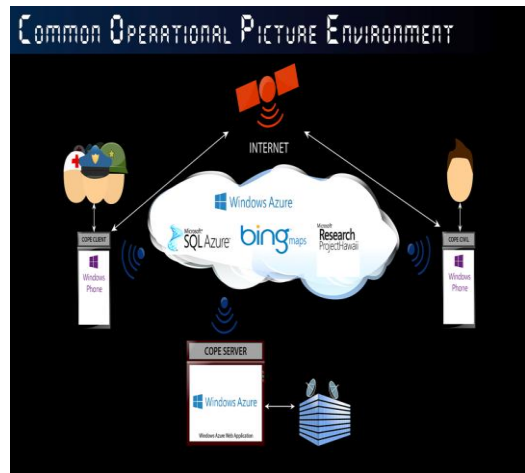


Fig. 1 COPE Architecture

COPE system may not only increase the security of the officer but also security of any of us. As a long term “side effect” the COPE system will be gradually creating a crime map that may be used for further crime analysis and wise investment of money for security. All the data gathered from a mobile device may become a sufficient tool that will help people to **COPE with real dangers**.

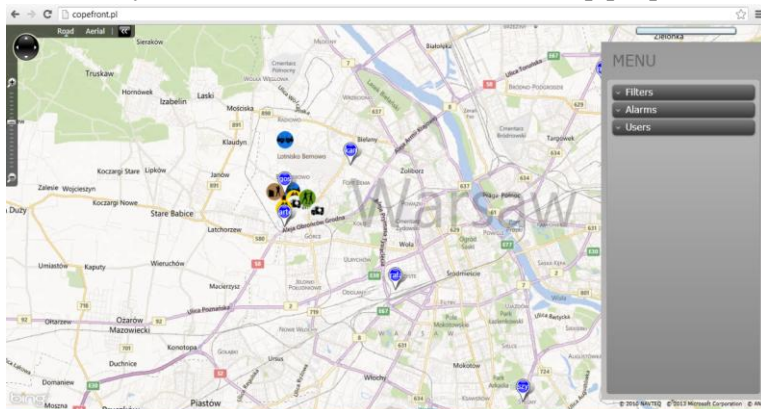


Fig. 2 GUI of Command Center module



Fig. 3 GUI of Client module

Team Leader:
 Maj. Rafał KASPRZYK Ph.D. Eng.