



Cybernetics Faculty
Computer and Information Systems Institute
 phone: (+48) 22 683 95 04
 e-mail: rkasprzyk@wat.edu.pl
 http://www.wcy.wat.edu.pl

GUARDIAN is a modern Emergency Response System (ERS) with *incremental information delivery model* – the new way of thinking about emergency actions management.

GUARDIAN provides three essential features in managing rescue procedures:

- the automation of the process of notifying about the threat – only one click is needed to start a rescue action;
- the support of the communication between the emergency services and the headquarters;
- the provision of up to date information about the rescue action status.

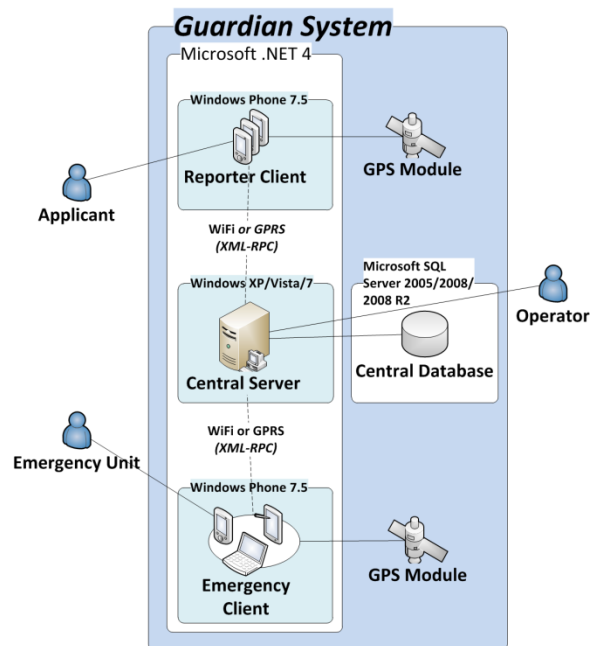


Fig. 1 GUARDIAN Architecture

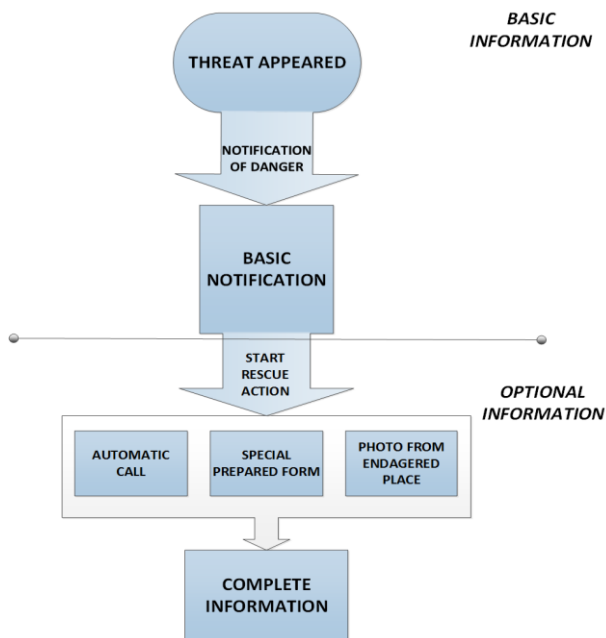


Fig. 2 Incremental information delivery model

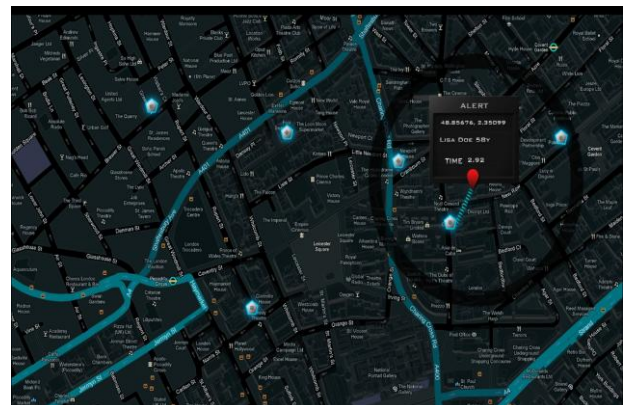


Fig. 3 GUI overview

Team Leader:
 Maj. Rafał KASPRZYK Ph.D. Eng.